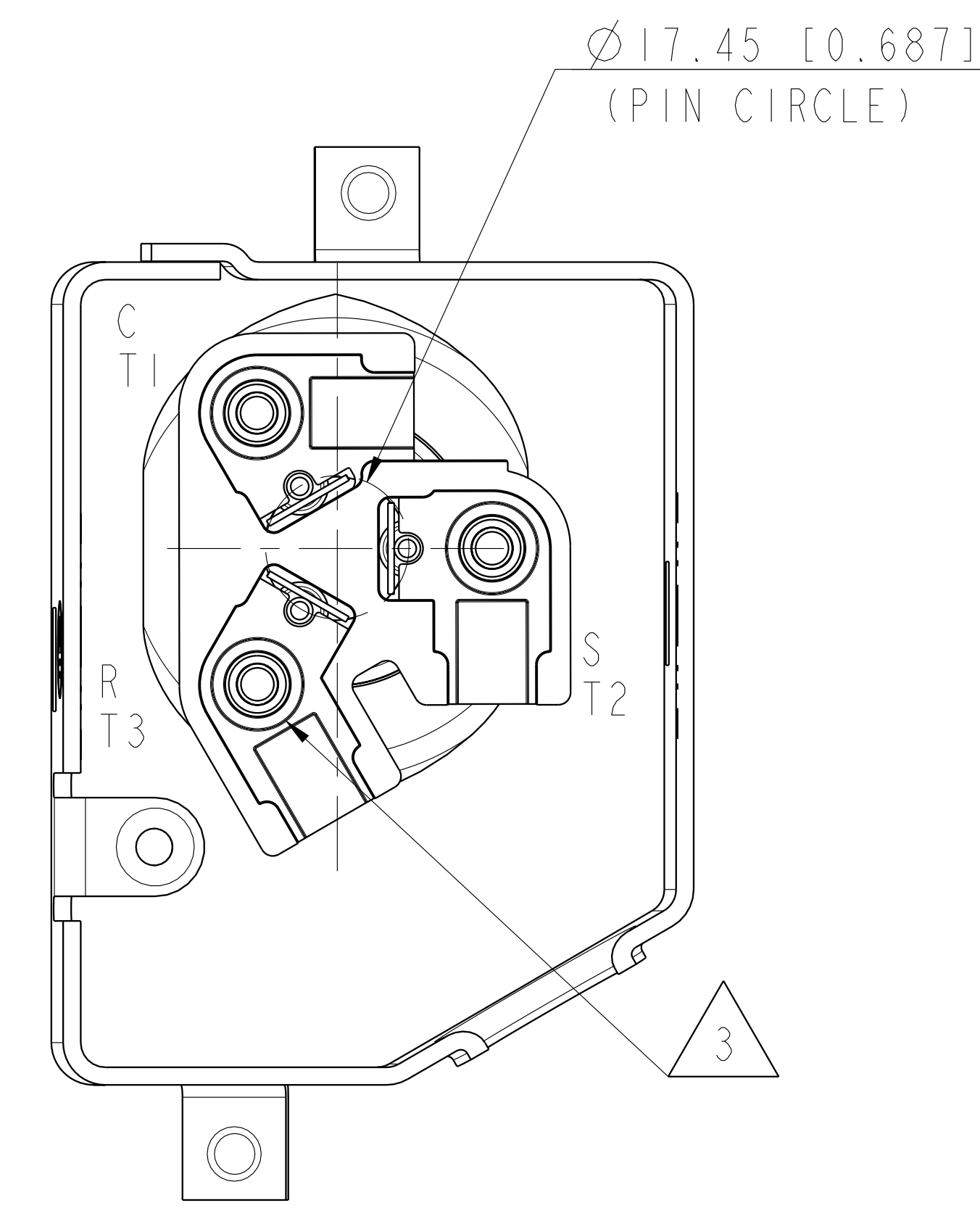
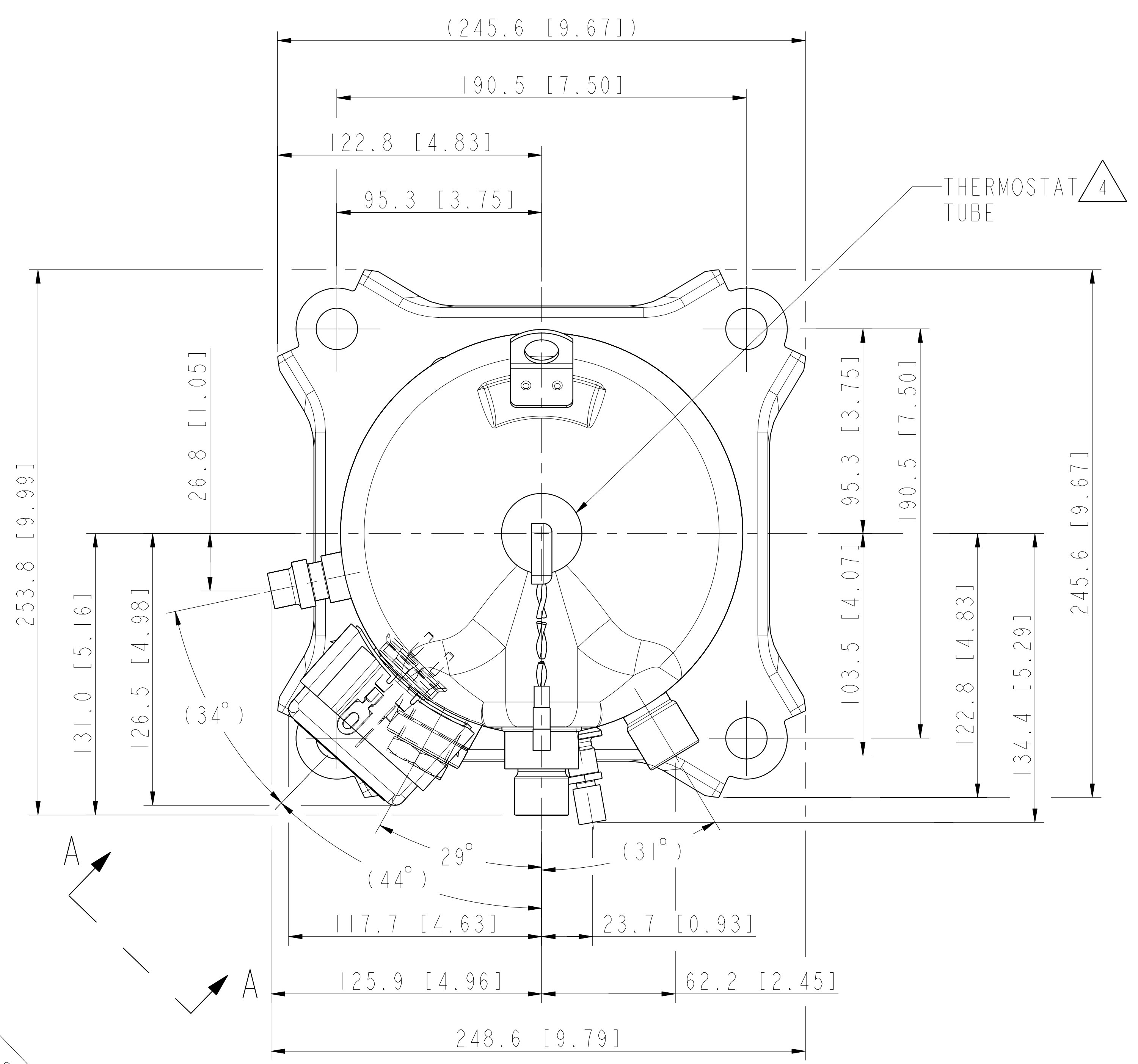


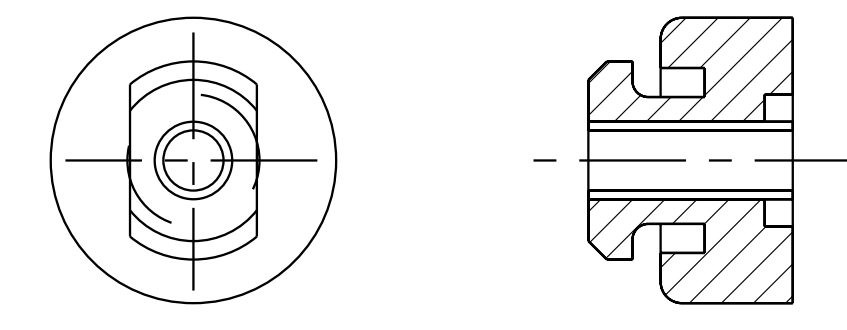
| SPECIFICATIONS | |
|----------------|-------------------|
| ES NO. | DESCRIPTION |
| ES81-159 | CLEANLINESS |
| ES81-250 | IDENTIFICATION |
| ES92-155 | CONVERSION-METRIC |



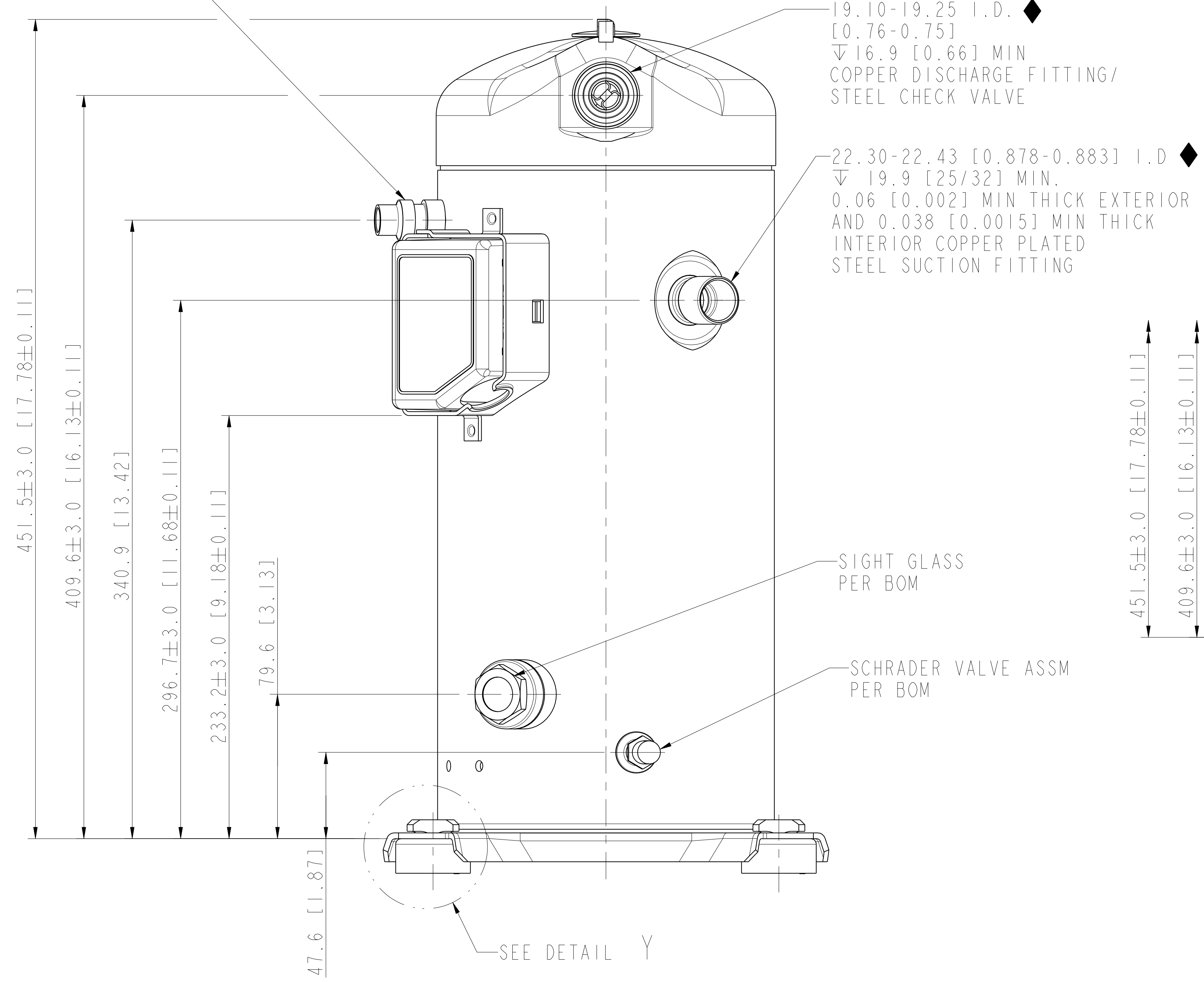
TERMINAL BOX LAYOUT OPTIONS
TERMINAL BOX COVER NOT SHOWN
VIEW A-A
SCALE 3:2

- NOTES:
- 1 ALL TOLERANCES ± 1.50 [0.060] UNLESS OTHERWISE SPECIFIED.
 - DUE TO ACCUMULATED ASSEMBLY TOLERANCES THE LISTED COMPONENTS MAY VARY FROM THE MOUNTING HOLES AS SHOWN BELOW:
 - ◆ SUCTION FITTING : ± 3.0 [0.12]
 - ◆ DISCHARGE FITTING: ± 3.0 [0.12]
 - 2. TUBE ENDS MUST BE PLUGGED.
 - 3 TORQUE T-BLOCK SCREWS TO 2.4-2.6 Nm [21-23 IN LBS].
 - 4 FOR MORE INFORMATION SEE PRODUCT CATALOG.
 - 5. FULL HEIGHT OF COMPRESSOR DOES NOT INCLUDE MOUNTING SPACERS.
 - 6. MOUNTING KIT:

| | |
|-------------------|-------------|
| GROMMET DUROMETER | 4 FOOT KIT |
| 35-45 | 527-0116-00 |



12.80-12.90 ID
[0.503-0.507]
▽ 12.7 [0.50]
VAPOR INJECTION FITTING
PER BOM

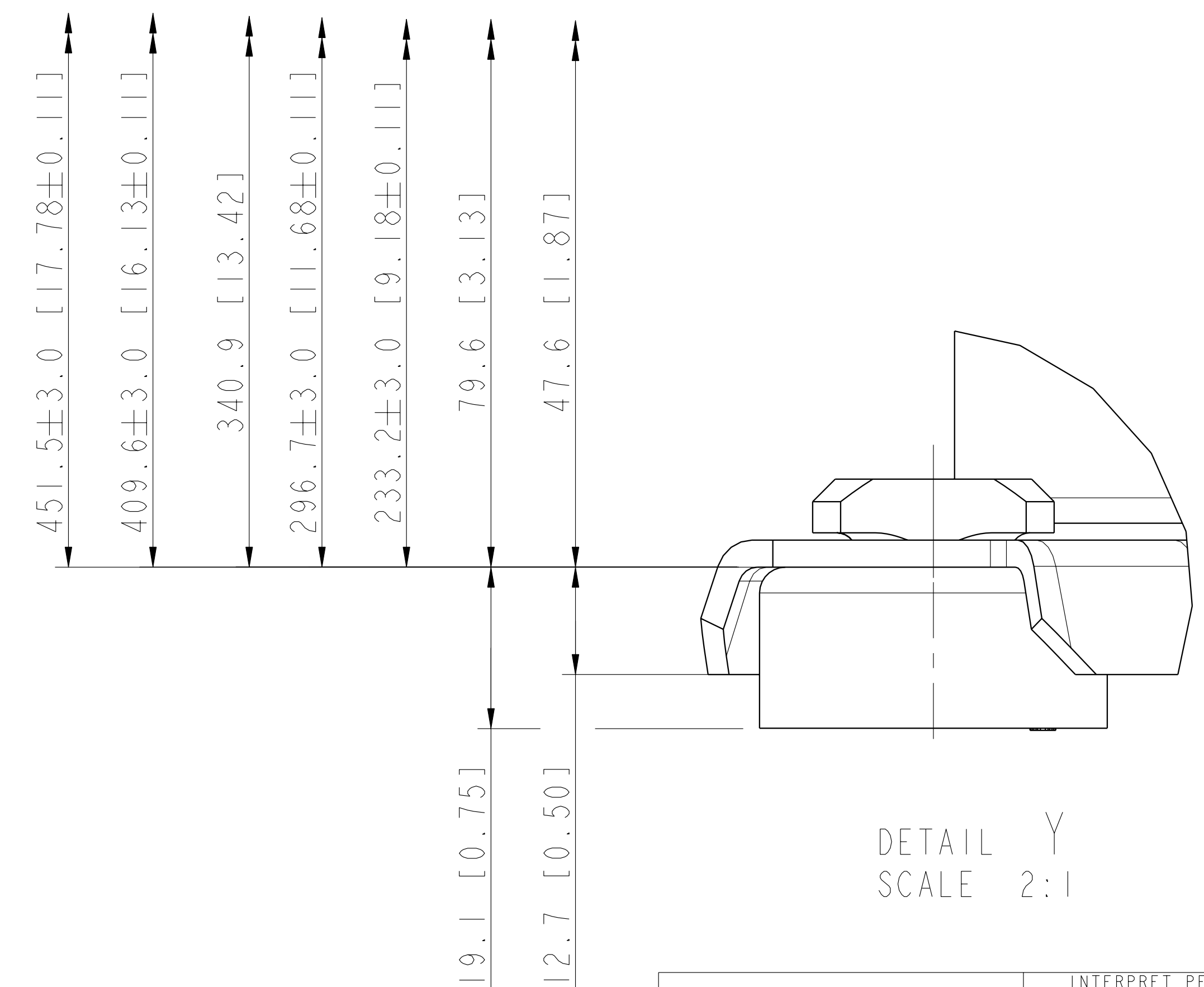


COMPRESSOR WIRING DIAGRAM

USE COPPER CONDUCTORS ONLY. USE MINIMUM 75°C WIRE FOR AMPACITY DETERMINATION. INTERNAL MOTOR PROTECTION - ALLOW TIME FOR RESET. OVERCURRENT PROTECTION DEVICE RATING AND TYPE MUST BE IN ACCORDANCE WITH REGULATORY AGENCY END PRODUCT APPROVALS-SEE SYSTEM NAMEPLATE. CRANKCASE HEATER, WHEN APPLIED, MUST BE CONNECTED ONLY TO ITS RATED VOLTAGE. TO CORRECT IMPROPER ROTATION OF THREE PHASE MODELS, SWITCH ANY TWO SUPPLY LINES. REFER TO THE APPLICABLE SYSTEM WIRING DIAGRAM.

XX 005-1213-00

8-06



DETAIL Y
SCALE 2:1



INTERPRET PER ASME Y14.5M-1994 AND EMERSON CLIMATE TECHNOLOGIES, INC. DESIGN STANDARDS DS2002 DO NOT SCALE DRAWING

THIRD ANGLE PROJECTION

CRITICAL PRODUCT CHARACTERISTIC

UNLESS OTHERWISE SPECIFIED DIMENSIONS ARE MILLIMETER OR (INCH)

TOLERANCES:
1-PLACE ±
2-PLACE ±
ANGULAR ±

| REV. NO. | DESCRIPTION | DATE | BY | CHKD | APPR |
|----------|---|----------|-----|------|------|
| 2 | UPDATE TITLE BOX TO CORRECT ECN NUMBER | 02-13-12 | AMN | DC | RY |
| 1 | REVISED VAPOR INJECTION FITTING CALLOUT | 02-02-12 | AMN | DC | RY |
| 0 | RELEASED | 09-14-11 | AMN | DC | RY |

ENG NOTICE NO. REV. NO. REVISIONS DATE BY CHKD APPR

0 THIS DRAWING AND INFORMATION CONTAINED HEREIN ARE THE EXCLUSIVE PROPERTY OF EMERSON CLIMATE TECHNOLOGIES, INC. AND SHALL BE RETURNED UPON DEMAND AND SHALL NOT BE REPRODUCED IN WHOLE OR IN PART, DISCLOSED TO ANYONE ELSE OR USED, WITHOUT THE WRITTEN CONSENT OF EMERSON CLIMATE TECHNOLOGIES, INC.

MATERIAL SPECIFICATION

DRAWN BY: AMN
DATE: 09-14-11
SUPERSEDES DWG. NO. / REV. NO.: 497-3543-00 / 32
SCALE: 1:2
DATE FORMAT: MM-DD-YY

TITLE: REF DWG-WELD COMP ASSM
DRAWING NUMBER: 497-1160-00
SHEET 1 OF 1